



WEBINAR

FOODCHAIN ID[®]



Integrating Genesis R&D to Automate Your Innovation Workflow

Presented by

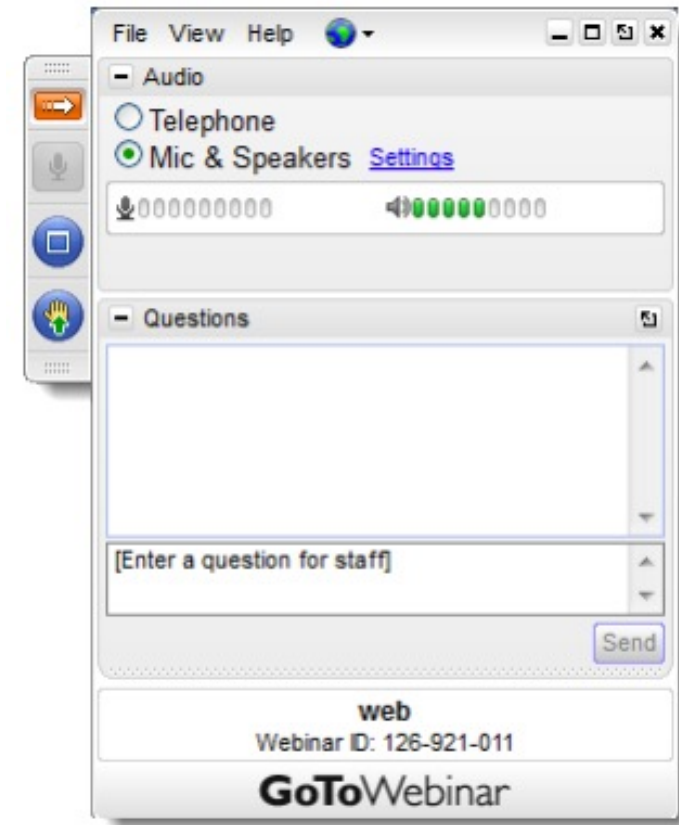
ESHA Research | FoodChain ID | Chick-fil-A

Wednesday, August 24, 2022

9:00 AM PDT | 11:00 PM CDT | Noon EDT

Please Note!

- The webinar is being recorded
- All webinars available on our website
- Submit your questions in the GoToWebinar control panel
- We'll email a copy of the recording and the slides following the webinar



Speakers for Today

Chris Eakin



ESHA's Genesis R&D Product Development and Labeling Software assists users in all aspects of food-product development, from recipe development and virtual food creation to nutrition facts panels creation & compliance.

Wes Frierson



FoodChain ID is a leading provider of software, testing, and certification solutions to enable the global food supply chain to meet compliance and transparency requirements as well as accelerate product innovation.

Faustine Sonon



Known for its chicken sandwiches and signature hospitality, Chick-fil-A is one of the largest American fast food restaurant chains with over 2,700 locations in the US, Puerto Rico and Canada.



About ESHA Research

ESHA Research was established in 1981 as one of the very first nutrition software solutions. Today, ESHA's suite of nutritional software products, services, and databases are recognized as the industry's top choice for food and supplement formulation, recipe development, labeling, nutritional analysis, and regulatory compliance.

- ESHA Solutions
- Genesis R&D® Food Formulation
- Genesis R&D® Supplement Formulation
- REX® Regulations Expert Document Search Portal
- Food Processor® Nutrition & Diet Analysis
- Consulting Services

Our mission is to help remove the complexity of product development and regulatory compliance for the food, beverage, and supplement industries through software, services, and nutritional databases.



Trusted Nutrition Database

- 130,000 raw foods, ingredients and recipes, plus processing materials, chemicals/additives, and other industry ingredients from more than 1,800 reputable sources:
 - USDA
 - Manufacturers
 - Restaurants
- Meticulous research, data checks and continual updates.
- Nutrition breakdown for 172 nutritional components, including mandatory and voluntary label nutrients.



Our Reach



**900 Colleges and Universities
with 10,000 students accessing
our programs annually**



**75 of the top 100 Food
Manufacturers in the U.S.**

**18 of the top 20
Restaurants in the U.S.**



Genesis R&D Food Overview

Genesis R&D is designed to help you manage the challenges faced in the food industry.

- Nutrition Analysis
- Reformulation and Conceptualization
- Nutrition Facts Label
- Ingredient Lists and Allergen Declarations
- Nutrient Content Claims
- And More!



Formulation Made Easy



- Create recipes and formulas using ESHA database items or user-added ingredients.
- Simulate formulation changes in real time – no waiting for a lab result.
- Calculate moisture, fat, and processing adjustments: subtract or add water/fat and view results on-screen immediately.
- View line-item detailed nutritional breakdown of your formulation.
- Monitor changes with built-in audit tracking.

Nutrition Facts

2 servings per container

Serving size 1 cup (140g)

Amount per serving

Calories 160

% Daily Value*

Total Fat 8g 10%

Saturated Fat 3g 15%

Trans Fat 0g

Cholesterol 0mg 0%

Sodium 60mg 3%

Total Carbohydrate 21g 8%

Dietary Fiber 3g 11%

Total Sugars 15g

Includes 5g Added Sugars 10%

Protein 3g

Vitamin D 5mcg 25%

Calcium 20mg 2%

Iron 1mg 6%

Potassium 230mg 4%

*The % Daily Value tells you how much a nutrient in a serving of food contributes to a daily diet. 2000 calories a day is used for general nutrition advice.

Nutrition Facts Labels



- Customize your label by utilizing the myriad of built-in preferences and layout options
- Generate ingredient statements
- Track and declare allergens
- Identify qualifying nutrient content claims

International Labeling

Create country-specific government-compliant nutrition labels.

Available country specific label modules:

- Canada
- European Union
- Mexico
- United States

Nutrition Facts	
2 servings per container	
Serving size	1 cup (140g)
Amount per serving	
Calories	160
% Daily Value*	
Total Fat 8g	10%
Saturated Fat 3g	15%
Trans Fat 0g	
Cholesterol 0mg	0%
Sodium 60mg	3%
Total Carbohydrate 21g	8%
Dietary Fiber 3g	11%
Total Sugars 15g	
Includes 5g Added Sugars	10%
Protein 3g	
Vitamin D 5mcg	25%
Calcium 20mg	2%
Iron 1mg	6%
Potassium 230mg	4%
*The % Daily Value tells you how much a nutrient in a serving of food contributes to a daily diet. 2000 calories a day is used for general nutrition advice.	

Nutrition Information			
Energy	497 kJ / 119 kcal	6% RI	692 kJ / 166 kcal
Fat	6 g	9% RI	8.4 g
Of which Saturates	2.3 g	12% RI	3.2 g
Of which Mono-unsaturates	0.6 g		0.9 g
Of which Polyunsaturates	2.6 g		3.6 g
Carbohydrate	13 g	5% RI	18 g
Of which Sugars	11 g	12% RI	15 g
Of which Polyols	0 g		0 g
Of which Starch	0.6 g		0.8 g
Fibre	2.3 g		3.2 g
Protein	2 g	4% RI	2.8 g
Salt	0.11 g	2% RI	0.15 g
Fluoride	2.28 mg	65% RI	3.18 mg
Salt content is exclusively due to the presence of naturally occurring sodium.			
Contains negligible amounts of Polyols, Vitamin A, Vitamin C, Thiamin, Riboflavin, Niacin, Vitamin B6, Folic Acid, Vitamin B12, Biotin, Pantothenic Acid, Potassium, Chloride, Calcium, Phosphorus, Magnesium, Iron, Zinc, Copper, Manganese, Selenium, Chromium, Molybdenum, Iodine.			
Reference intake of an average adult (8,400 kJ / 2,000 kcal)			

Información Nutricional	
Tamaño de la Porción 122g	
Raciones por Envase	
Contenido Energético	620 kJ (150 kcal)
Proteínas	2 g
Grasas	8 g
Grasa Saturada	3 g
Carbohidratos	17 g
Azúcares	14 g
Fibra Dietética	2 g
Sodio	5 mg
% IDR / IDS*	
Vitamina B6 (Piridoxina)	15%

Nutrition Facts	
Per 1 cup (122 g)	
Calories 140	% Daily Value *
Fat 8 g	11 %
Saturated 3 g	15 %
+ Trans 0 g	
Carbohydrate 19 g	
Fibre 2 g	7 %
Sugars 14 g	14 %
Protein 2 g	
Cholesterol 0 mg	
Sodium 5 mg	1 %
Potassium 200 mg	4 %
Calcium 20 mg	2 %
Iron 0.5 mg	3 %
Thiamine 0.05 mg	4 %
Riboflavin 0.05 mg	4 %
* 5% or less is a little, 15% or more is a lot	

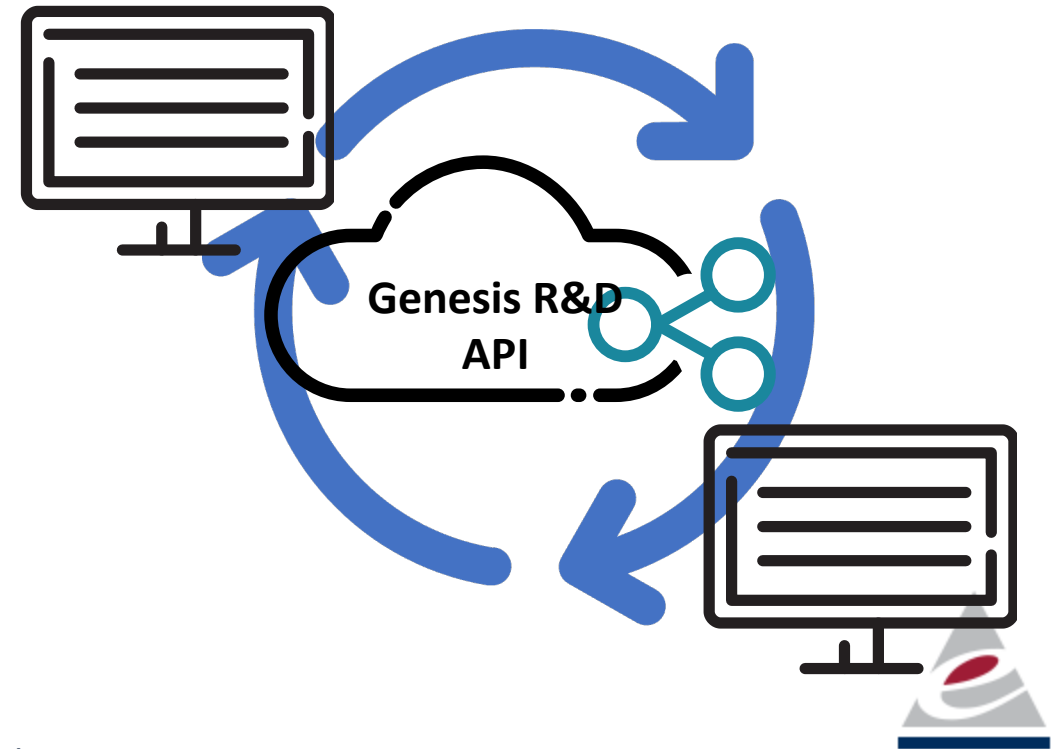


Improve Your Innovation Workflow

With the Genesis R&D API

The Genesis R&D API allows real-time data streaming between Genesis R&D and common ERP, PLM, and MDM vendor solutions.

- Get BOMs and send to Genesis R&D for nutrient analysis and label creation
- Send back recipe data analysis and nutrition facts labels





Genesis R&D API Summary

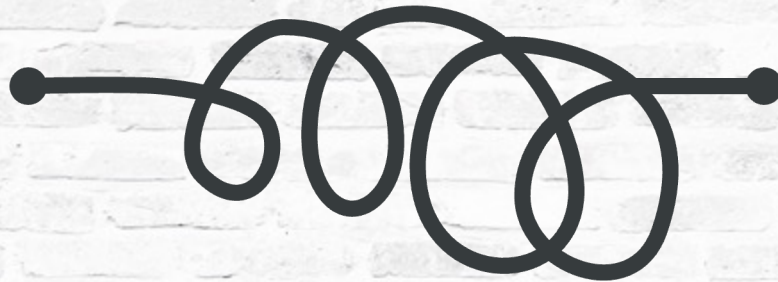
Data from Genesis R&D can be sent to external and internal interfaces such as webpages, point-of-sales systems, inventory management systems, and QC or document controls.

- Unattended export of recipes, ingredients, and labels.
- Filter records to be exported by name, group, creation date, and/or modified date.
- Export specific fields such as ingredient statement, cost, user codes, nutrient, etc.
- Runs as a service in IIS and is available both as a SOAP and REST interface

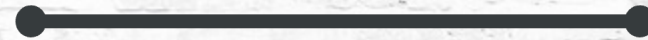
Streamline Your Integration

With FoodChain ID Intelligent Connections

Without Pre-Built Connectors



With Pre-Built Connectors



FoodChain ID

Integrated Nutrition Labeling

What's Driving **Integrated** Nutrition & Labeling

Market Demands	Digital Demands	Demand for Agility
<ul style="list-style-type: none">● Market expansion opportunities● More trials and experimentation● Increasingly complex and shifting regulatory environment	<ul style="list-style-type: none">● Importance of robust, digital product definition● Early feedback and “design for compliance” are must have capabilities	<ul style="list-style-type: none">● React to disruptions● Resource efficiency● Speed, with standards● Reduce burden of change maintenance

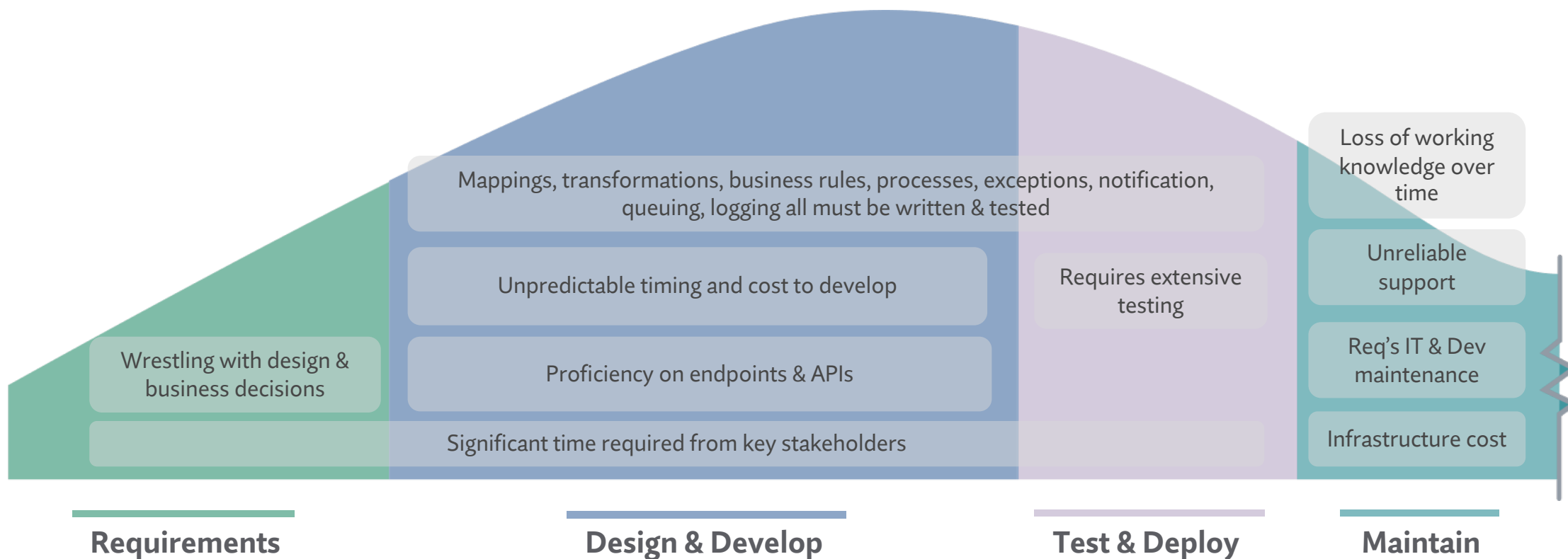


A Typical Flow...



Traditional Integration Challenges

What prevents companies from enjoying the enormous benefits of connected data and processes?



Intelligent Connections

A unique cloud-based integration service that:

Is designed to **overcome the common barriers** that prevent companies from investing in valuable integrations



Allows you to **easily integrate** your key systems to popular solutions like ESHA's Genesis R&D

Intelligent Connections

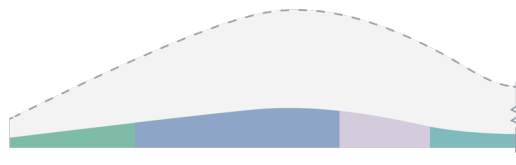
Pre-built and End-to-end



Pre-Built Accelerators & Applications

- Connectors for common endpoints
- Orchestrations pre-built for common use cases
- Apps and analytics that add value and flexibility

Compatible with Genesis R&D On-Prem and Cloud versions using the API



Implementation Methodology

- Template-based
- Fast but flexible
- Predictable with rapid time to value



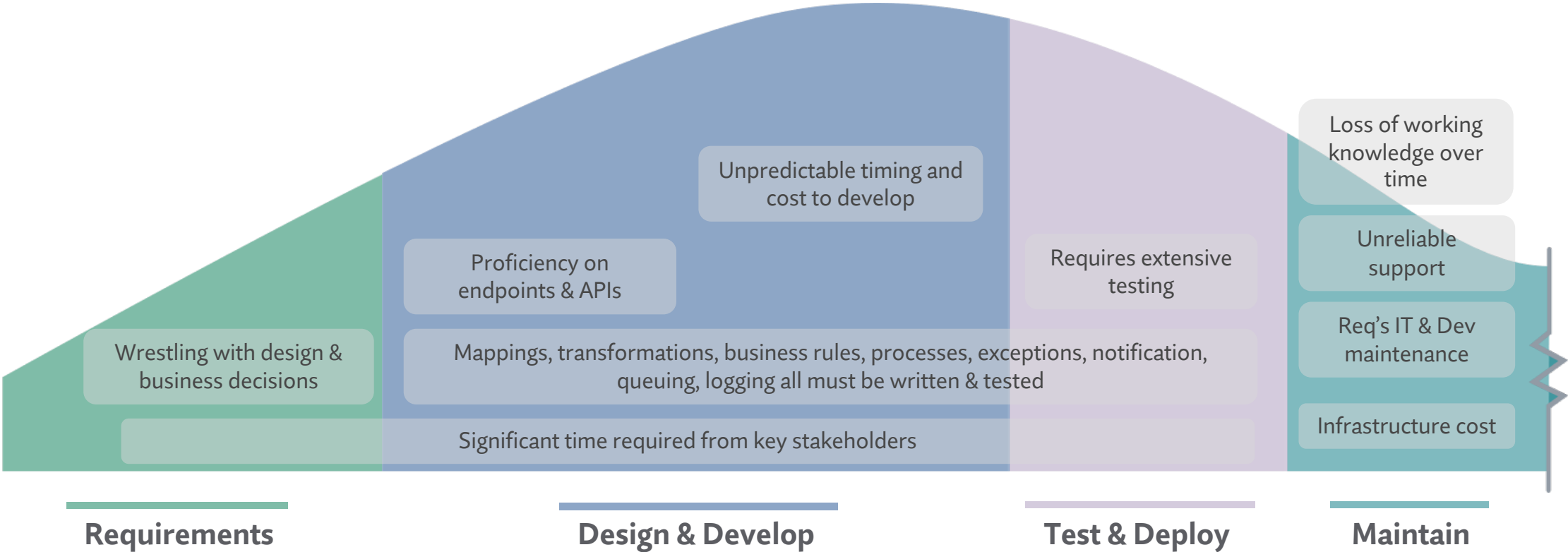
Monitoring & Support

- End-to-end, US-based support with SLAs
- No infrastructure required
- Dashboards for monitoring and status



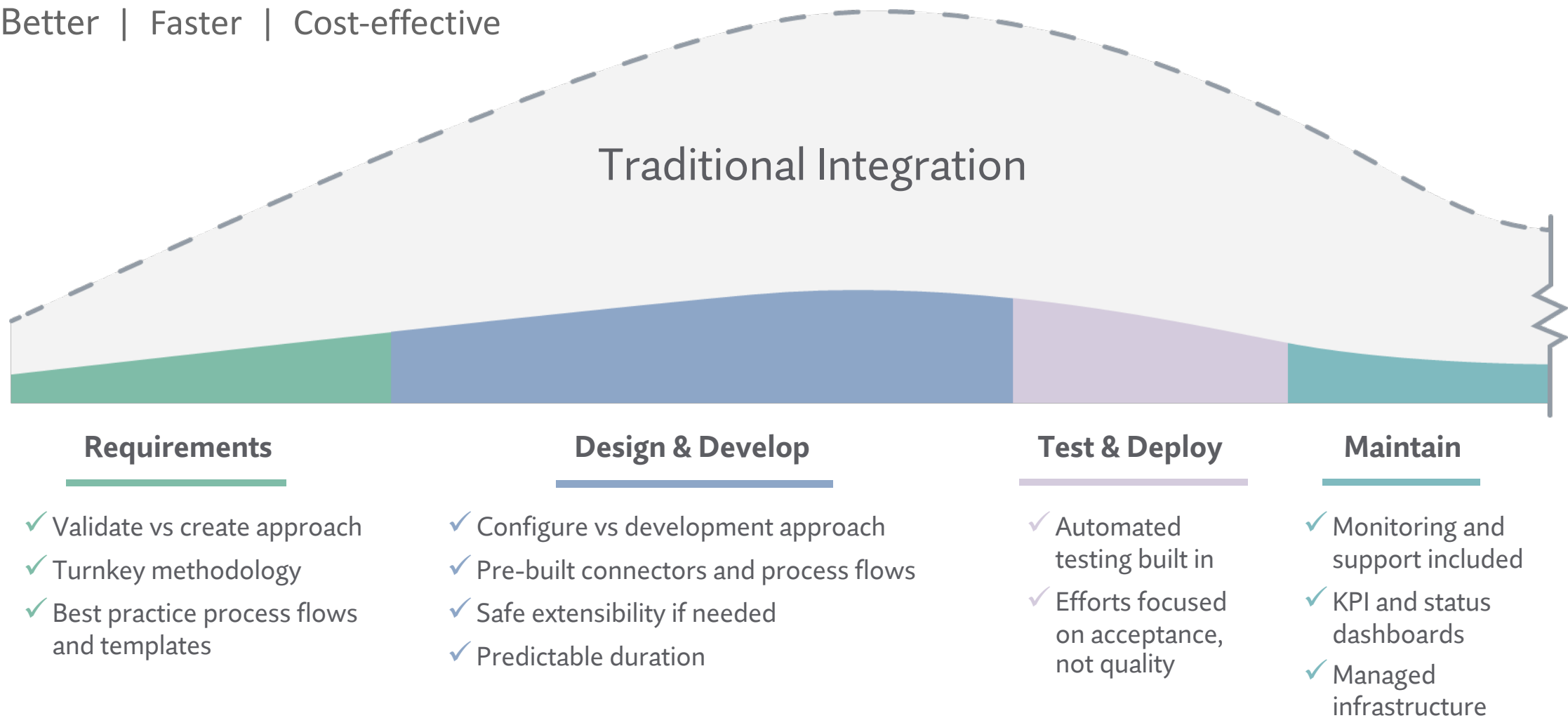
Intelligent Connections

Better | Faster | Cost-effective

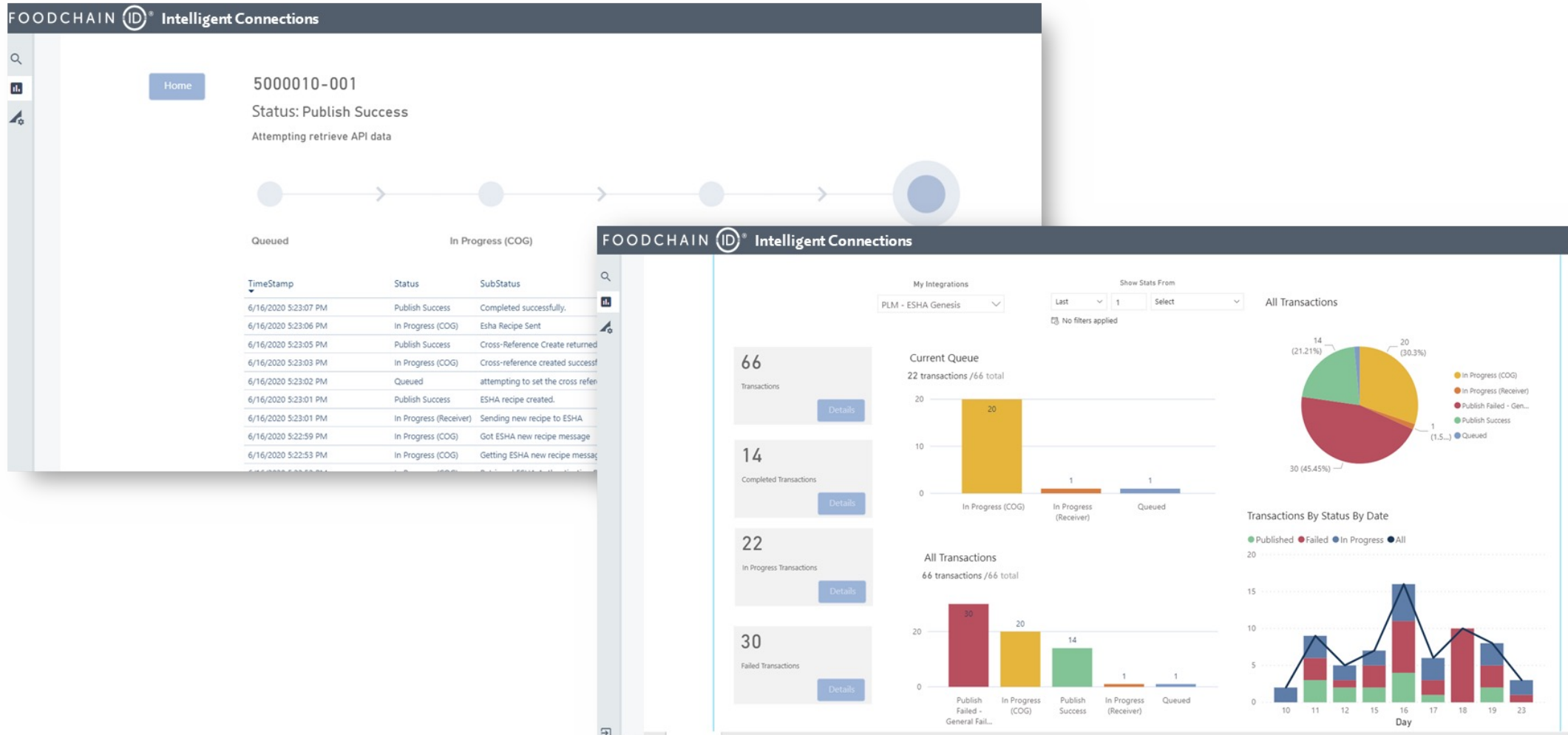


Intelligent Connections

Better | Faster | Cost-effective

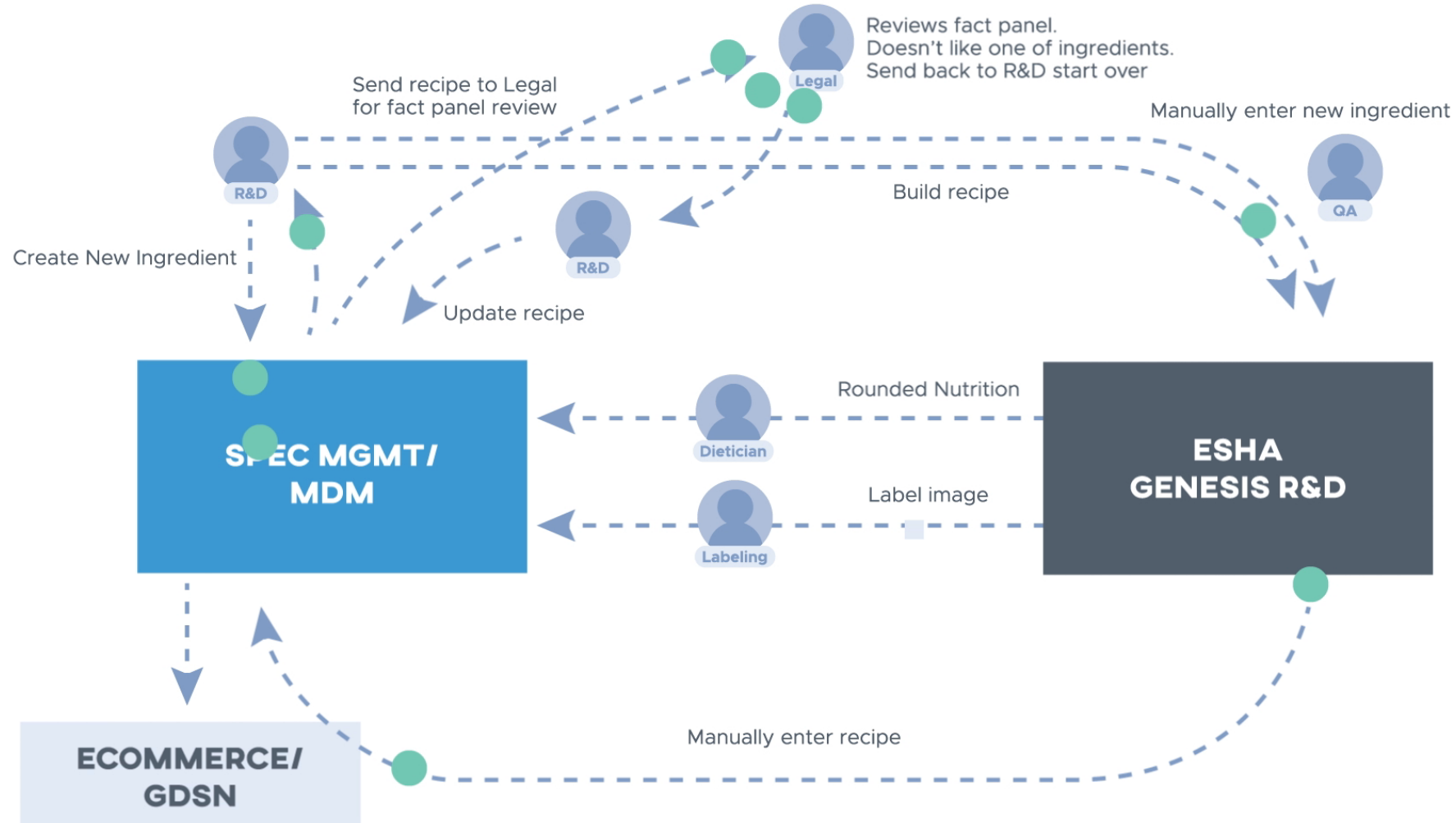


Advanced Insights and Monitoring



Intelligent Connections

Better | Faster | Cost-effective





PLM/Genesis R&D Integration Case Study

Faustine Sonon

Key Drivers for Decision

- Reduce risk while preserving existing processes, PLM & ESHA platforms, and core deliverables
- Why Intelligent Connections?
 - 10+ years of PLM management partnership between the two companies
 - Solution was highly recommended

Key Drivers for Success

- Deep understanding of business case and how Intelligent Connections solved the problem
- Cross-functional planning and alignment between internal DTT (IT), Nutrition, PLM, and FoodChain ID teams
- Rigorous UAT

Benefits for Chick-fil-A

- Eliminated manual error via automation
- Overall reduced risk to the brand
- Gained capacity by automating previously manual step in process



Q&A

Questions can be submitted by typing your questions into the “Questions” dialog



Want more information?

✓ You will receive a follow up email

- Links to recording & contact info will be included

✓ Contact us directly at:

- sales@foodchainid.com
- sales@esha.com

Intelligent Connections Advantage

Accelerated Deployment

- Off the shelf connectors for popular vendor tools (like ESHA’s Genesis R&D)
- Proven process orchestrations and transformations that can be extended and tailored
- Turnkey, template-based methodology

Low Total Cost of Ownership (TCO)

- Subscription-based service
- No new infrastructure needed
- End-to-end support – monitored & fully supported

Enterprise-grade

- Modern & scalable
- Monitoring